

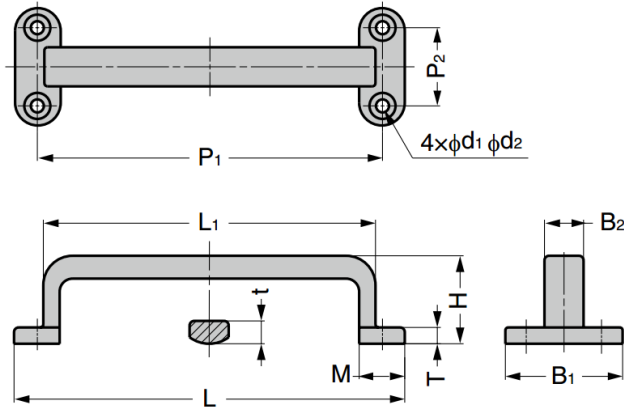
## GFT Double Hole Stainless Steel Handle

### Material

- Stainless steel 304, polished

### Parts Included

- GFT-120:** Raised countersunk head wood screw (SUS) 3.8×20
- GFT-150:** Raised countersunk head wood screw (SUS) 5.1×25



Part No.	L	L <sub>1</sub>	B <sub>1</sub>	B <sub>2</sub>	H	T	t	M	P <sub>1</sub>	P <sub>2</sub>	d <sub>1</sub>	d <sub>2</sub>
GFT-120	120	102	36	12	27	5	7	14	106	24	4.1	8
GFT-150	150	129	45	15	33	6	8	18	132	30	5.3	10.4

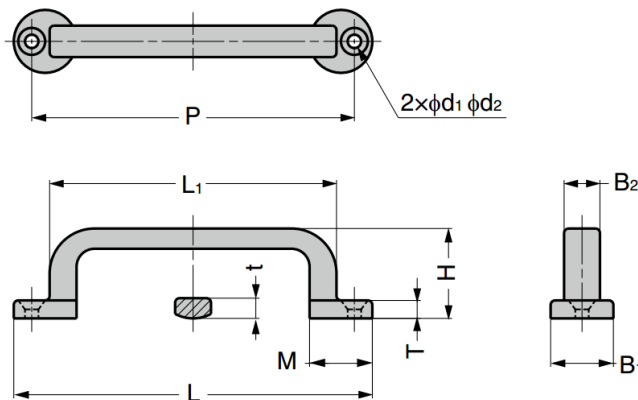
## GFT Single Hole Stainless Steel Handle

### Material

- Stainless steel 304, polished

### Parts Included

- GFT-65, GFT-80:** Raised countersunk head wood screw (SUS) 3.1×16
- GFT-100:** Raised countersunk head wood screw (SUS) 3.8×20



Part No.	L	L <sub>1</sub>	B <sub>1</sub>	B <sub>2</sub>	H	T	t	M	P	d <sub>1</sub>	d <sub>2</sub>
GFT-65	65	47	13	7	16	3.5	4	13	57	3.3	6.4
GFT-80	80	61	14	8	20	4	4.5	14	72		
GFT-100	100	75	18	10	25	5	5.5	18	88	4.1	8